

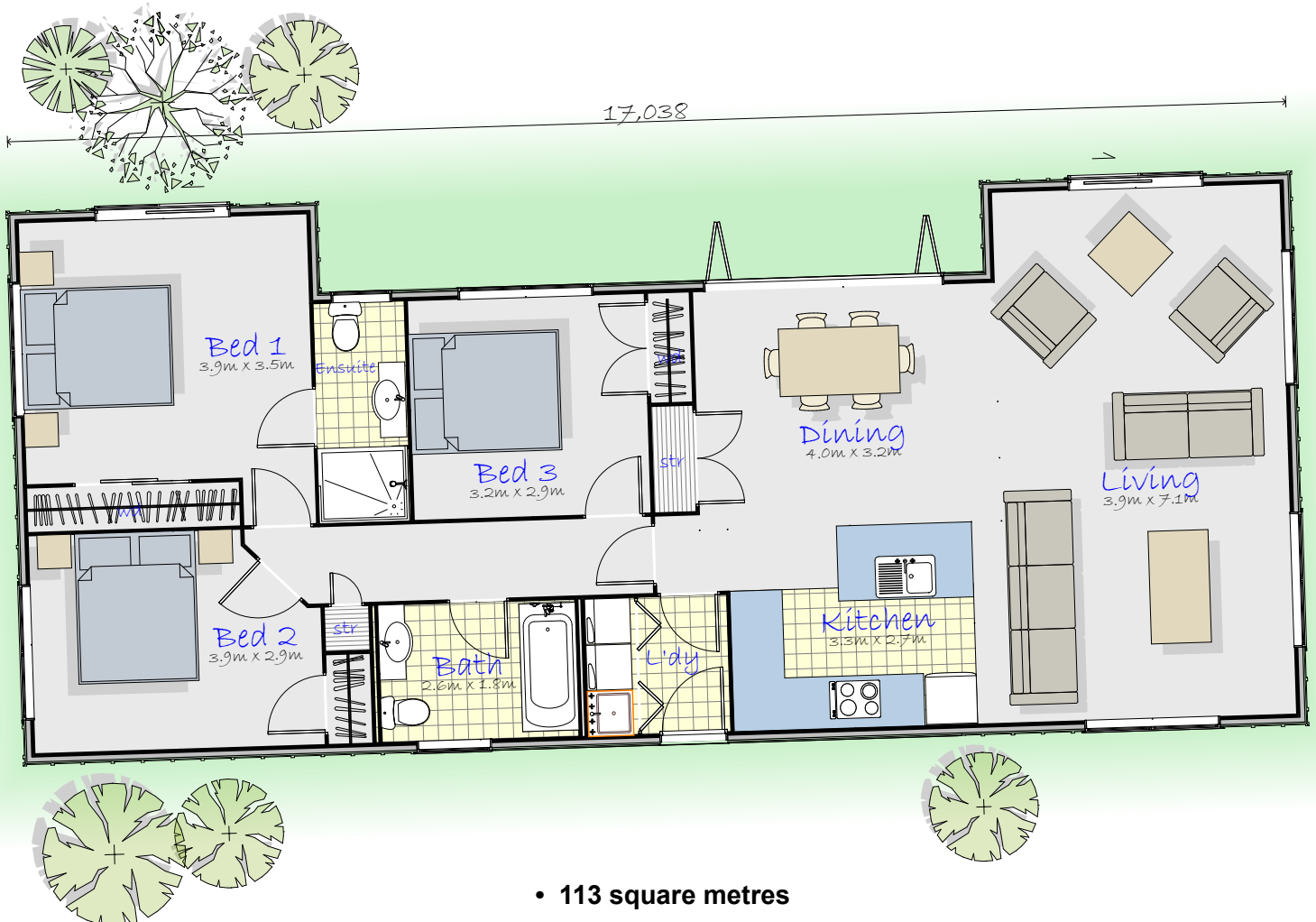


This design is ideal for a family home or high yield rental property.

It is well suited for either a south-entry north facing or north-entry north facing section with northern views from just about every room.

The living area is to the north and a large sunny deck or patio has direct access from the living areas and master bedroom sliding doors.

This orientation makes for a light sunny home with the sun streaming in to reduce your winter heating bills.



- 113 square metres
- A large kitchen with central island
- Spacious open plan living, dining and kitchen area
- 3 double bedrooms (all with large built-in wardrobes)
- Two bathrooms including a master bedroom ensuite
- A separate laundry with direct access from the back door
- Garden/deck from ranch sliders in the lounge & two bedrooms
- A large deck/patio area to bring outdoor living into the home
- Lots of extra storage space!

panel wood homes

Lance James

Mobile 021 341 381

FREE PHONE 0800 100 945

lance@panelwoodhomes.co.nz

panelwoodhomes.co.nz