

# Okarito

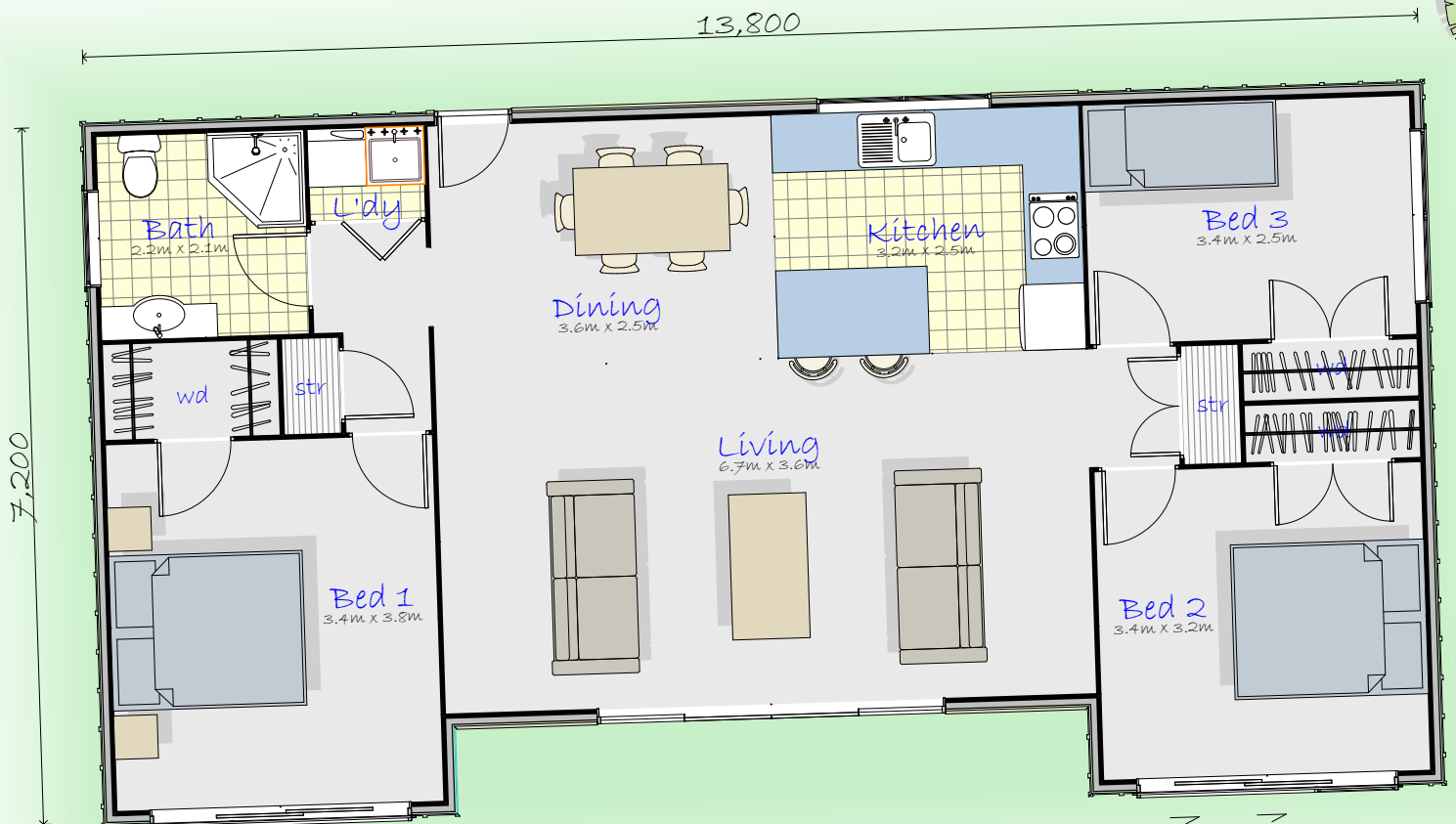
3 bedroom  
93m<sup>2</sup>



*This design is ideal for a first family home or high yield rental property.*

*It is well suited to either a south-entry north facing or north-entry north facing section. The living area is to the north and a large sunny deck or patio allows direct access from the living areas and bedrooms sliding doors.*

*This orientation makes for a light sunny home. The sun streams into the house in winter and reduces power bills.*



- 93 square metres
- A large spacious kitchen
- Open plan living, dining and kitchen area
- 3 bedrooms - 2 double & 1 single (all with large built-in wardrobes)
- Large family bathroom with shower
- A large deck/patio brings outdoor living into the home
- Garden/deck access from ranch sliders in the lounge and two bedrooms
- The master bedroom is away from the other two bedrooms for separation between sleeping areas
- Lots of extra storage space

panel wood homes

Lance James

Mobile 021 341 381

**FREE PHONE 0800 100 945**

[lance@panelwoodhomes.co.nz](mailto:lance@panelwoodhomes.co.nz)

[panelwoodhomes.co.nz](http://panelwoodhomes.co.nz)