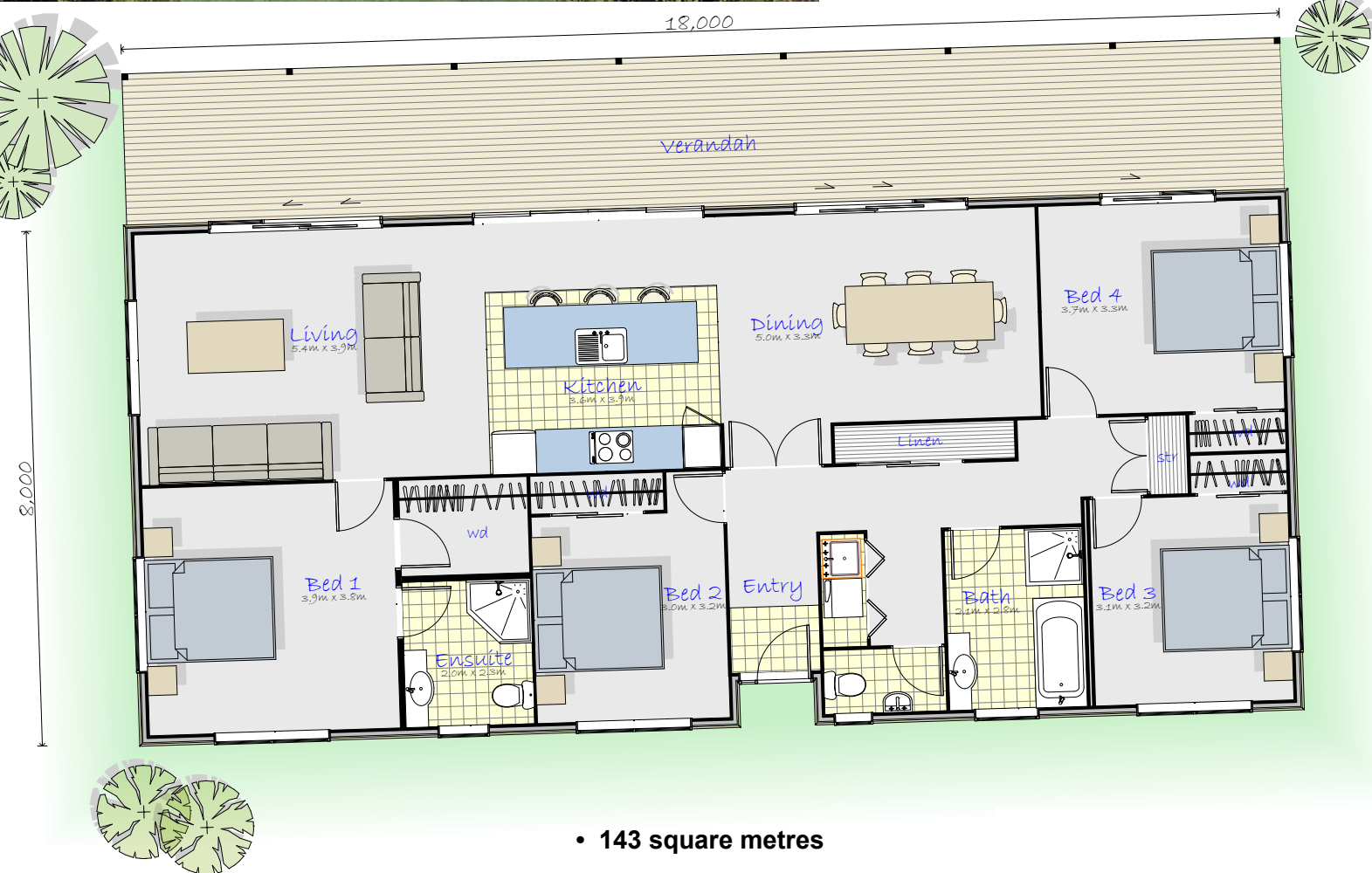




This design is ideal for a larger family home or 4 bedroom rental property.

It is well suited to a south-entry, north facing section with the living area to the north and a huge sunny deck outside the ranch sliders from the lounge, dining room, kitchen and bedroom.

This orientation would provide light filled living areas with direct indoor/outdoor flow to help keep the bedrooms cool in summer.



- 143 square metres
- Open plan living, dining and kitchen areas
- Good indoor/outdoor flow and large bedrooms
 - excellent for larger families
- Large kitchen with central island design
- 4 double bedrooms (all with large built-in wardrobes)
- Family bathroom plus full ensuite
- Separate, defined front entry
- Full-size separate laundry area
- Large outdoor deck running the full length of the house

panel wood homes

Lance James

Mobile 021 341 381

FREE PHONE 0800 100 945

lance@panelwoodhomes.co.nz

panelwoodhomes.co.nz